



# Lighting Proposal Memo

Pennsylvania State Employees Credit Union Corporate Headquarters  
Harrisburg, PA

Sarah Wujcik | Lighting + Electrical  
Faculty Advisor: Dr. Houser  
09.02.2011

The following memo examines the four spaces that I propose to study for my Senior Thesis Project. Each space is examined through considering the visual tasks and activities that will occur in each of the spaces, the overall size of the space, and the types of materials.

## Summary

The Pennsylvania State Employees Credit Union Corporate Headquarters is a multipurpose building that consists of offices, a cafeteria, a fitness center, and a daycare. The three story structure is a total of 234,000 square feet.

For the lighting design portion of my Senior Thesis, I will focus on four major spaces within the building. The proposed spaces include:

- Outdoor space | Exterior Façade and Entrance Plaza
- Circulation space | Outer Lobby, Inner Lobby, and a portion of the first floor Main Corridors
- Large work space | Marketing Open Office
- Special purpose space | Board Room

## Exterior Front Façade | Entrance Plaza


### Description

The façade is the key feature of the architectural design of the PSECU Corporate Headquarters running 513 feet long and 64 feet tall. The main feature of the façade, incorporates curved metal panels, glass curtain walls, and overhangs to highlight the entry. The façade incorporates a vast amount of glazing, which adds an element of transparency, which I will focus on within my lighting design. As a result of the façade facing south, overhangs are incorporated into the architectural design of the façade. They serve both an architectural and practical purpose.

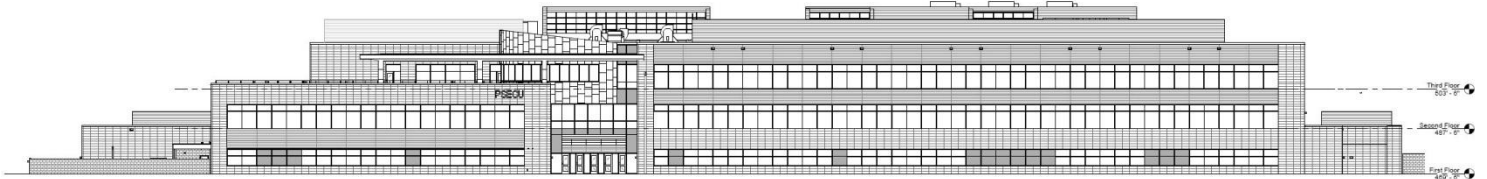
The entry plaza has a water feature and benches. This area is the primary means of egress into and out of the building. A road runs directly to the plaza for drop off purposes. Therefore, highlighting the walkways will be important in order for the patrons to feel safe. Another important safety criterion is to highlight faces to allow patrons to see those around them.



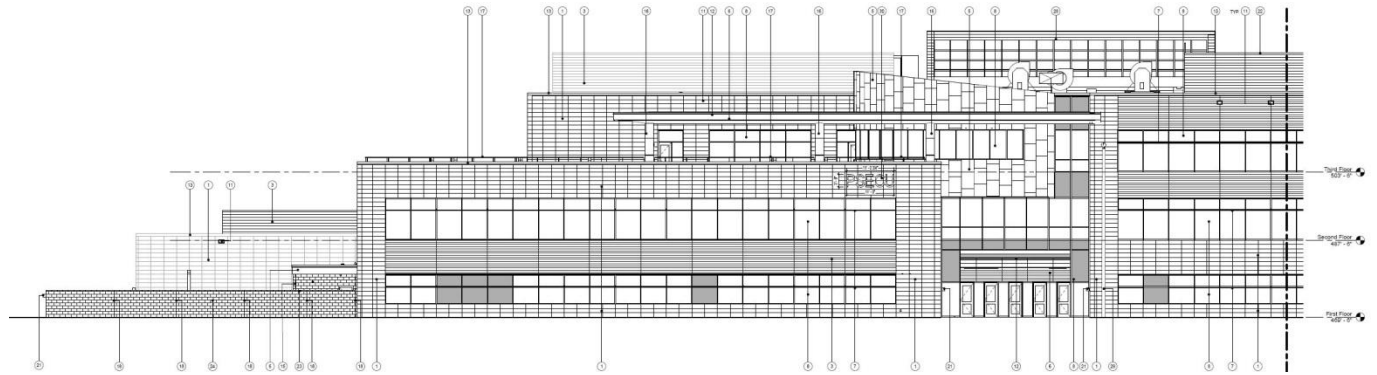
## Materials

 Terracotta Brick

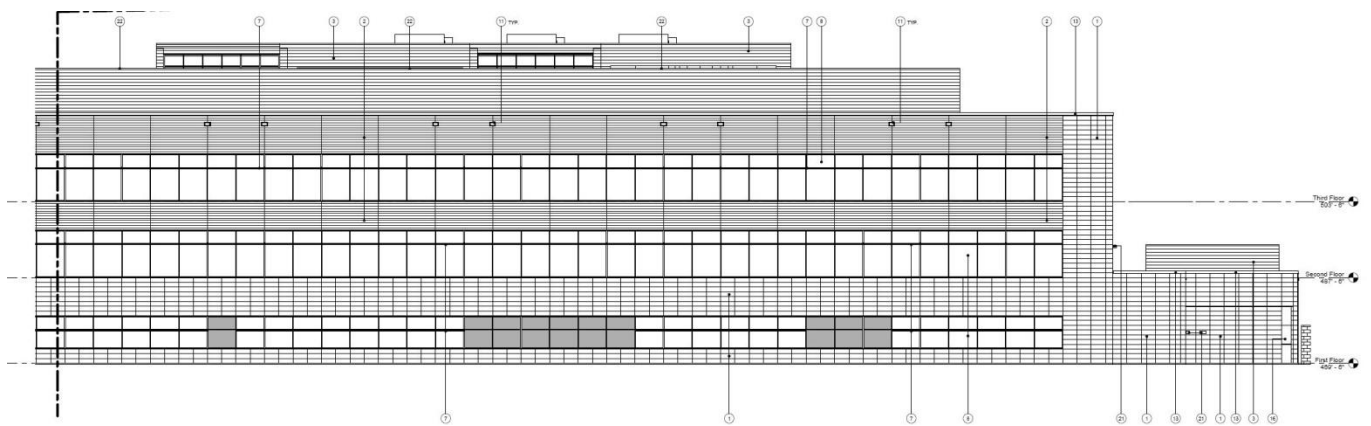
Other materials on the façade include glazing and metal panels. The glazing has a low e-coating. The walkways are concrete pavement, the flagpoles are aluminum, and the canopy is a translucent canopy system. The benches are transparent natural hardwood slats locked together.



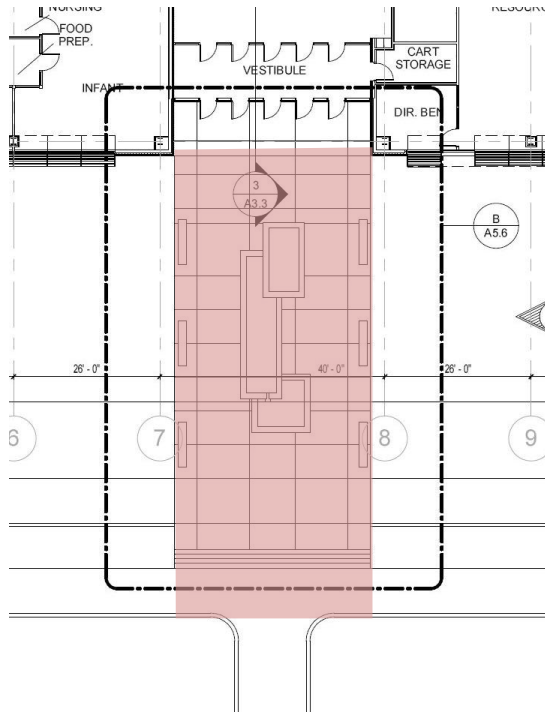
Elevation



Elevation A



Elevation B

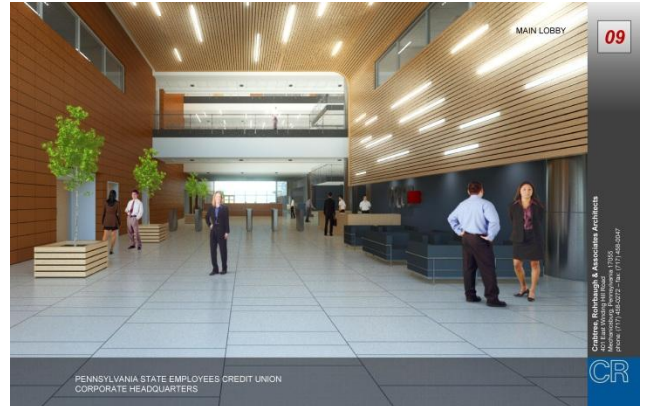


Entrance Plaza Floor Plan

## Outer Lobby | Inner Lobby

### Description

The proposed circulation space consists of both the outer and inner lobby, along with a portion of the main corridors. The dimensions are 100 ft x 42 ft. Along with an entry into the building, it also serves as a security area, entry into the day care, entry into the cafeteria, and entry into the main office corridors. While circulation is the primary activity in the lobby, facial recognition is also important for security and meeting purposes. Next to the information desk is a small seating area. Reading will be a primary task in the seating area. The space may also serve as a space for company parties and gatherings, so two different light levels will be considered to adjust for the different tasks.

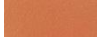


### Materials

#### Flooring

 Porcelain Anthracite Lappato Rettificato Ceramic Tile

#### Wall finishes

 Terracotta Brick

 Painted Gypsum Wall Board

 Wood panels are beech steamed quartered with Eggers' Gardall finish

#### Ceiling finishes

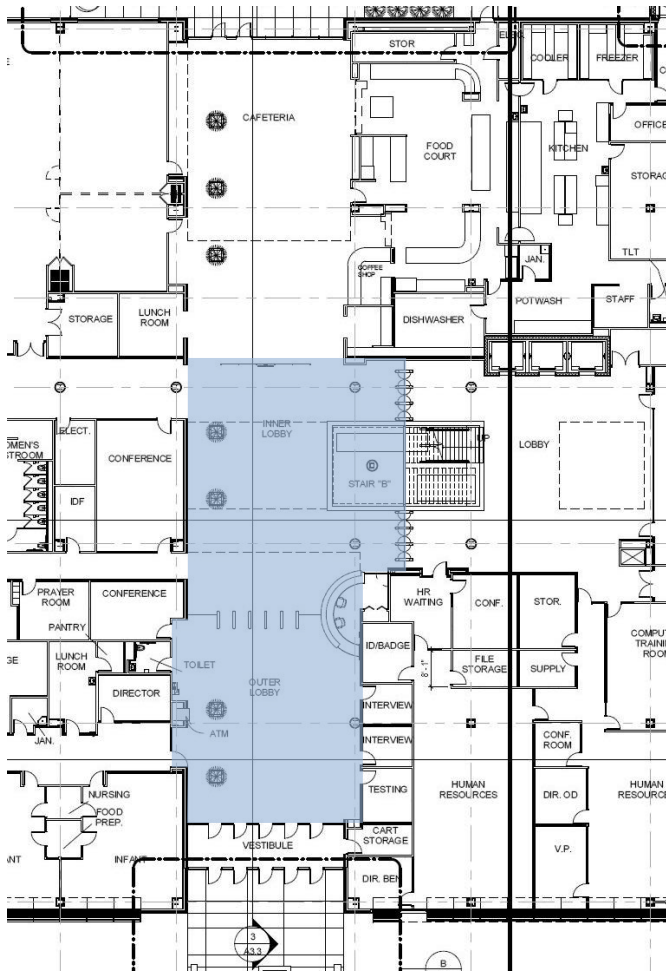
 Wood panels are beech steamed quartered with Eggers' Gardall finish

 Painted Gypsum Wall Board

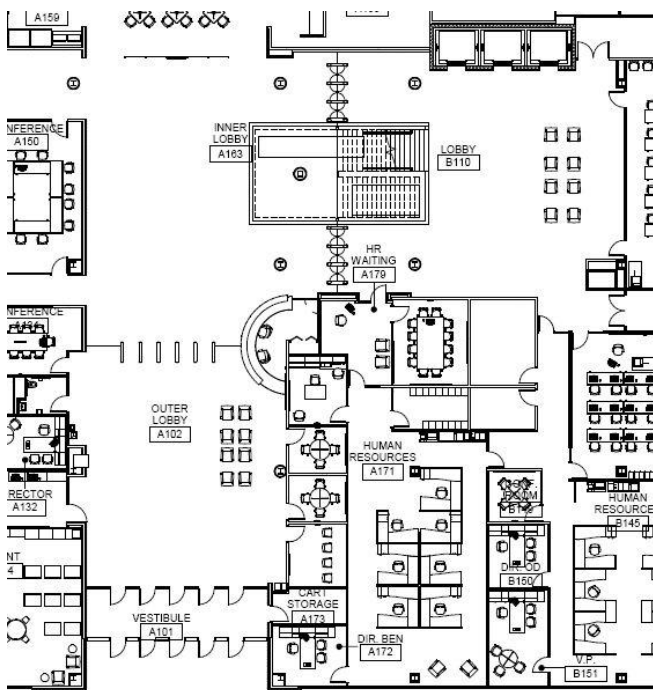
### Lighting Design Proposal

For Technical Report 3, I will incorporate the Flynn Impression of public vs. private into my schematic lighting design. The lobby will also be the space that I will propose three different schematic lighting solutions.

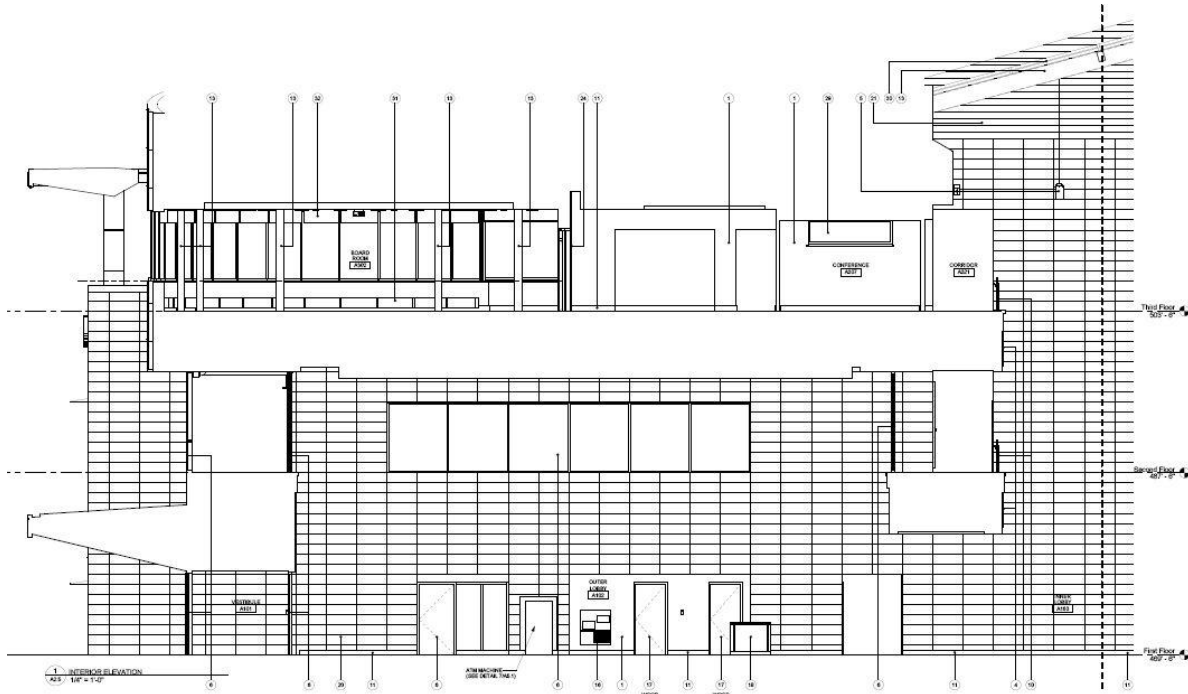




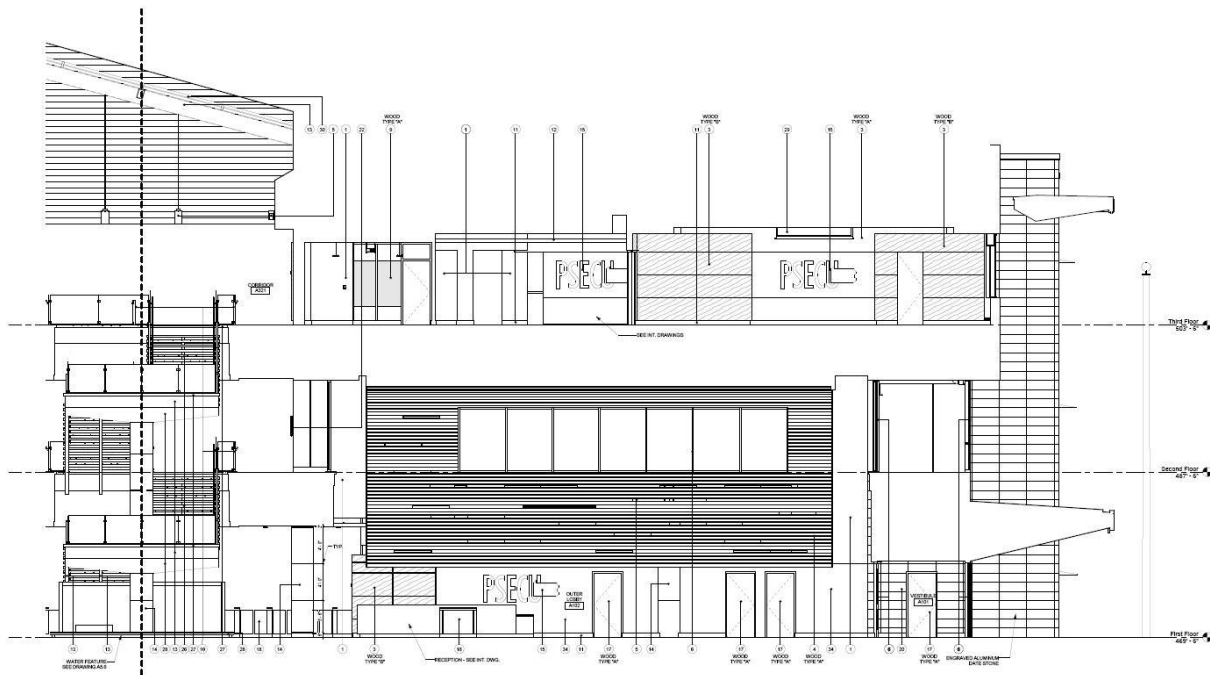
Outer Lobby and Inner Lobby Floor Plan



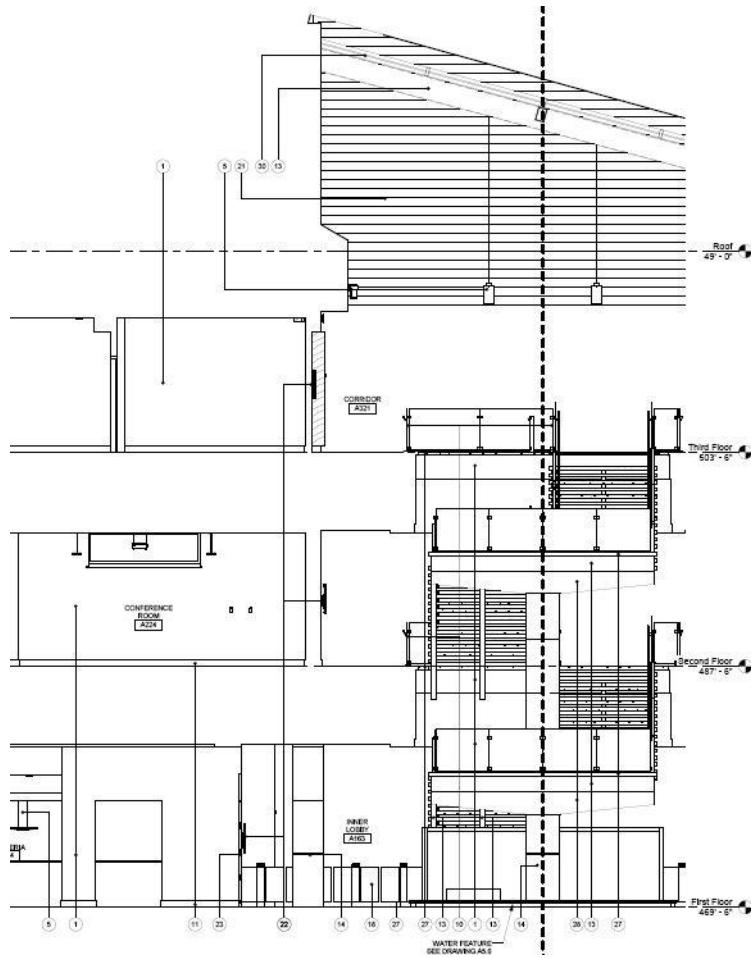
Outer and Inner Lobby Furniture Floor Plan



West Outer Lobby and Inner Lobby Section



East Outer Lobby and Inner Lobby Section



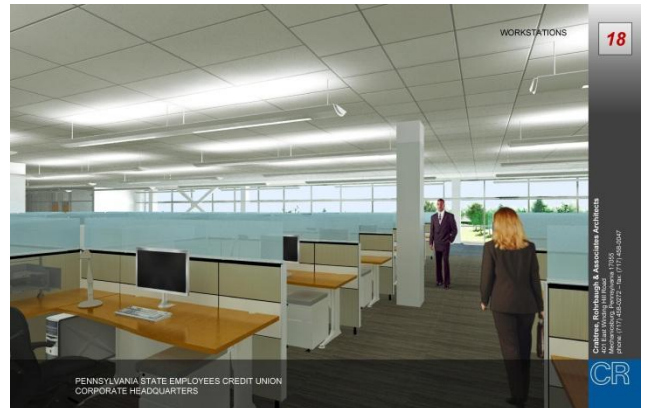
East Inner Lobby Section



## Marketing Open Office

### Description

The proposed large work space is the marketing open office. It is 86 feet by 67 feet with an area of 5330 square feet. The space is on the southern face of the structure with south facing glazing. The large glazed walls bring the outside into the space, while the glass partitions allow for the occupants to view the outdoors, along with bringing the daylight deep into the space. The space utilizes cubicles with partial glass partitions as seen right.



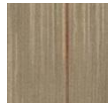
Office type work, such as heavy computer tasks, reading documents, and circulation are the primary tasks in the marketing office. Other elements that must be considered for this space are glare and facial recognition for casual meetings.

### Materials

#### Flooring



Shaw Contract Laser Cut Illuminate Carpet Tile

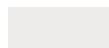


Shaw Contract Blur Tile Illuminate Carpet Tile



Shaw Contract Illuminate Carpet Tile

#### Wall Finishes



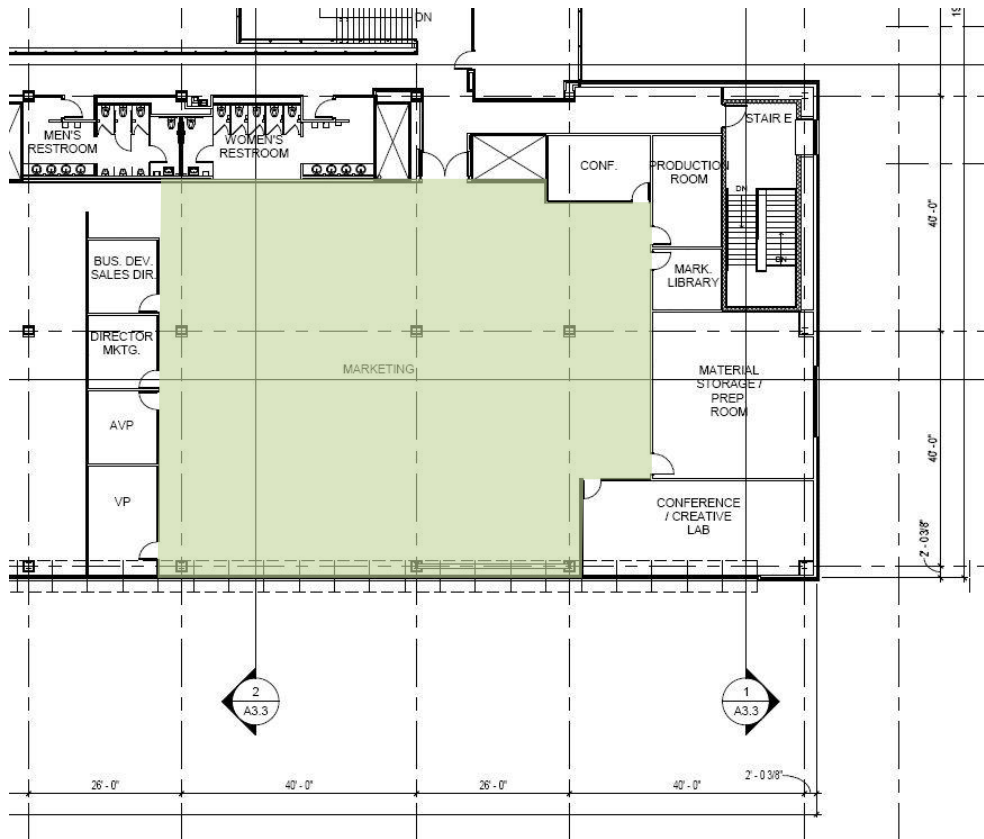
Painted Gypsum Wall Board

#### Ceiling Finishes

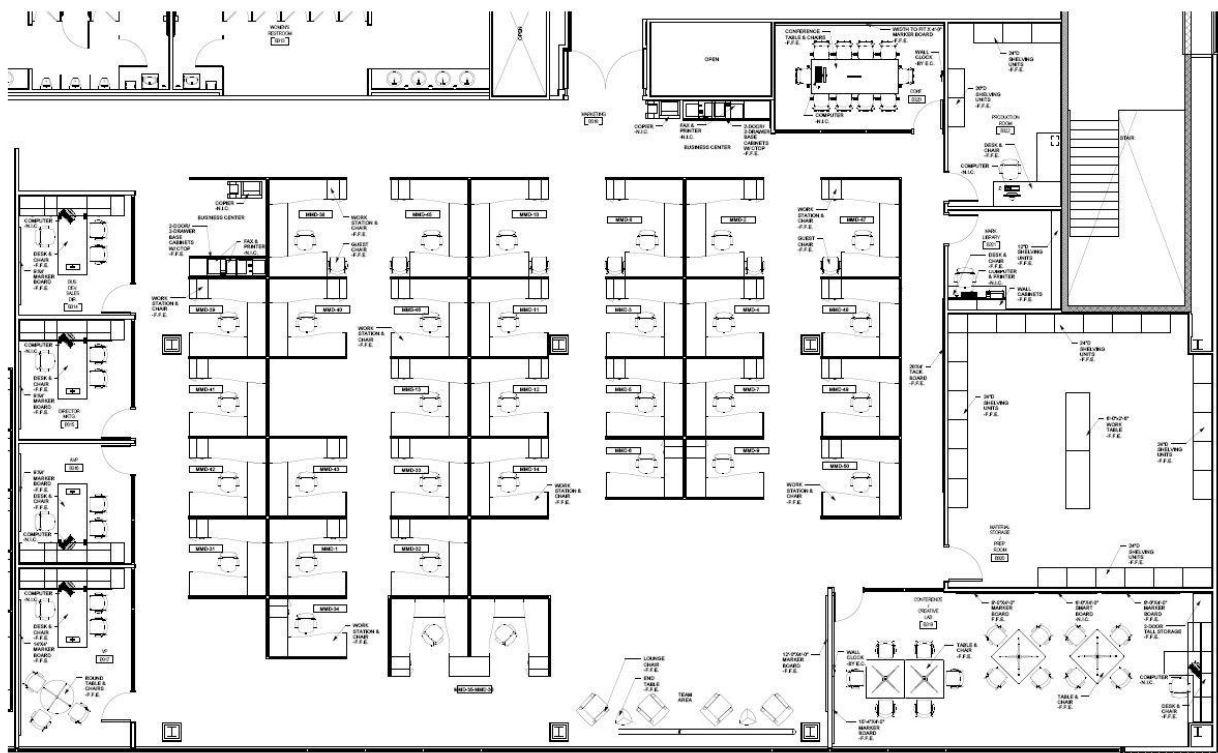
White Acoustical Ceiling Tile

### Lighting Design Proposal

The Flynn Impressions that will be incorporated into the lighting design solution of the marketing office are public and private. I will incorporate public into the circulation and sitting area and private into the personal cubicles. I will also integrate the Flynn Impression of spaciousness into the marketing office to provide an open feel.



Marketing Floor Plan



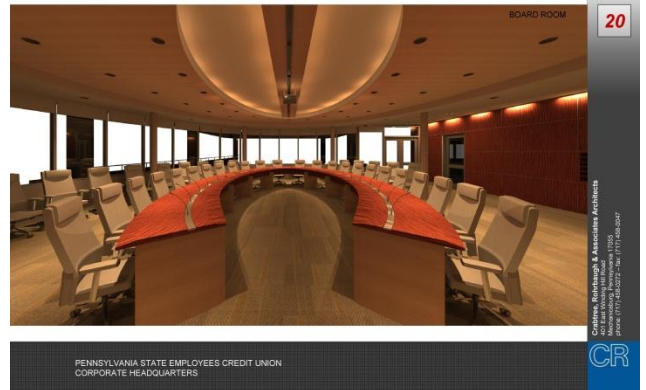
Marketing Furniture Floor Plan

## Board Room

### Description

The Board Room is the location where the executives will meet for conferences and other gatherings. This oval shaped, 1485 square feet space has a view onto the roof terrace. The glazing once again brings the outside into the space. I will incorporate the roof terrace into this space.

Reading papers, viewing faces, and circulation are the primary tasks in the Board Room. Meetings include those requiring reading paper and projection screens. Therefore, the space must incorporate different scenes. Glare is another important factor in the conference room design. Computers may also be incorporated into the space, so vertical and horizontal glare are two key design features. Activities that will occur on the roof terrace are general walking and possible company gatherings. Therefore, facial recognition, along with highlighting the pathways are important considerations.



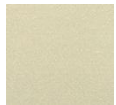
### Materials

#### Flooring



Shaw Contract Hill Tribe Ashlar Weave Accent Carpet Tile

#### Wall finish



Maharam Abalone Textile Wall Covering



Maharam Barley Textile Wall Covering



Wood panels are beech steamed quartered with Eggers' Gardall finish

#### Ceiling Finish

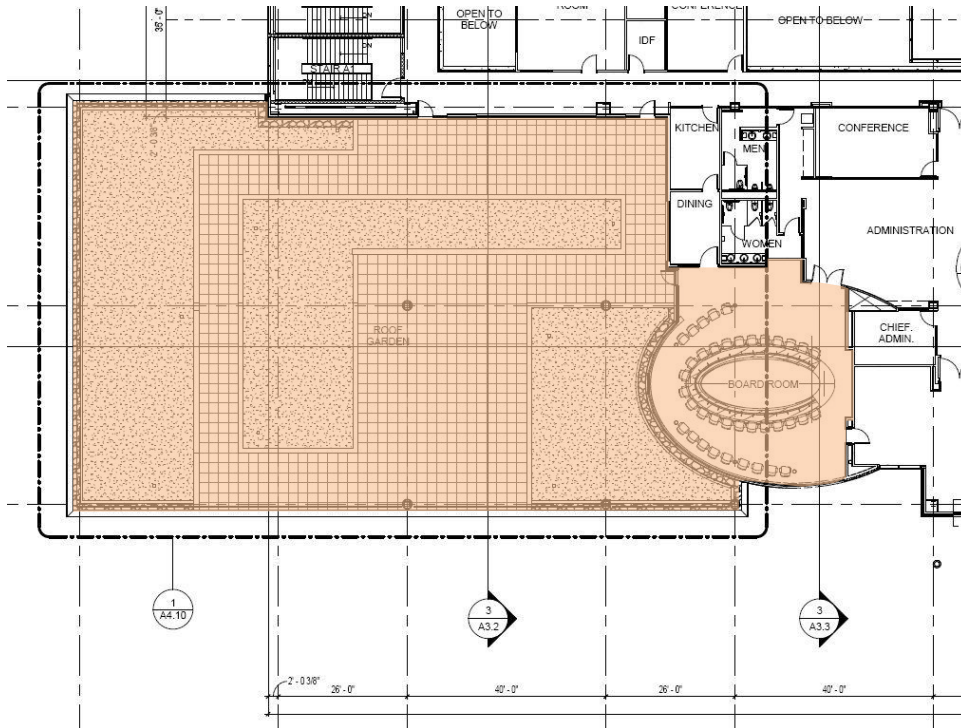


Natural Beech Wood Ceiling System

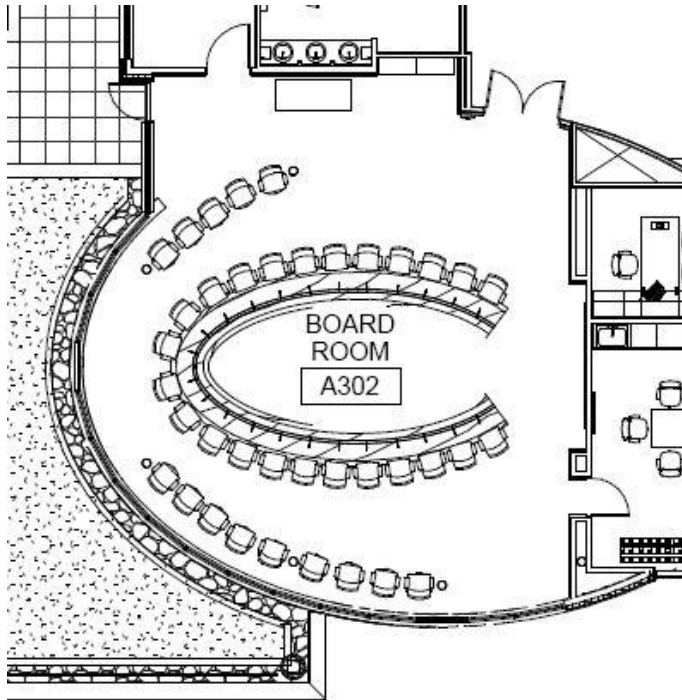
#### White Acoustical Ceiling Tile

## Lighting Design Proposal

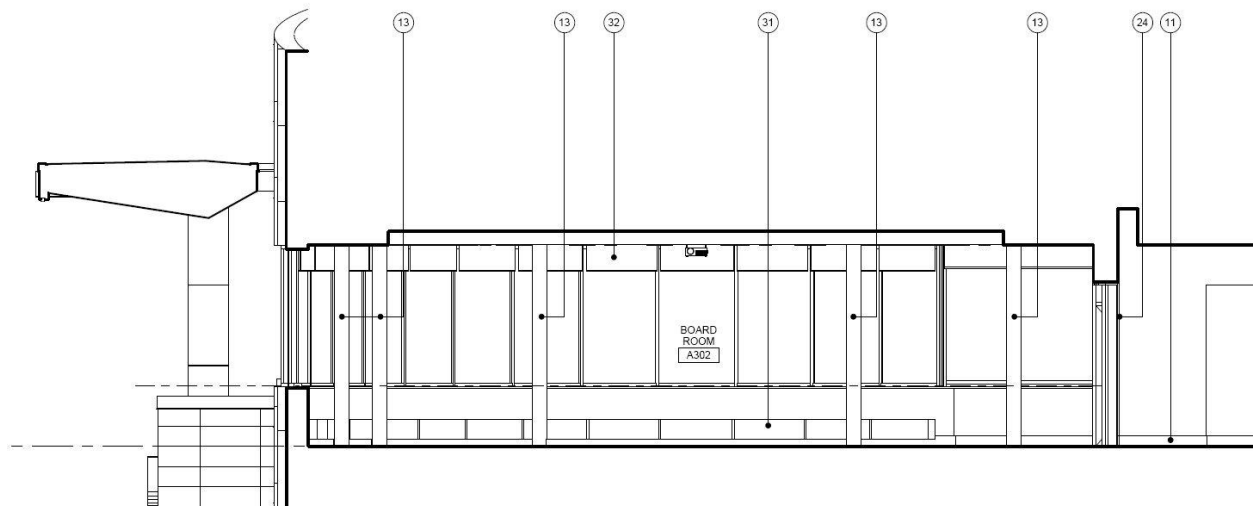
The Flynn Impression that I will integrate into the lighting design solution of this space is tension. I chose this impression because important decisions will occur here and therefore I want it to be a tense environment. For the roof terrace I will incorporate relaxation into the design. The overall space will focus on the contrast between relaxation and tension.



Board Room Floor Plan

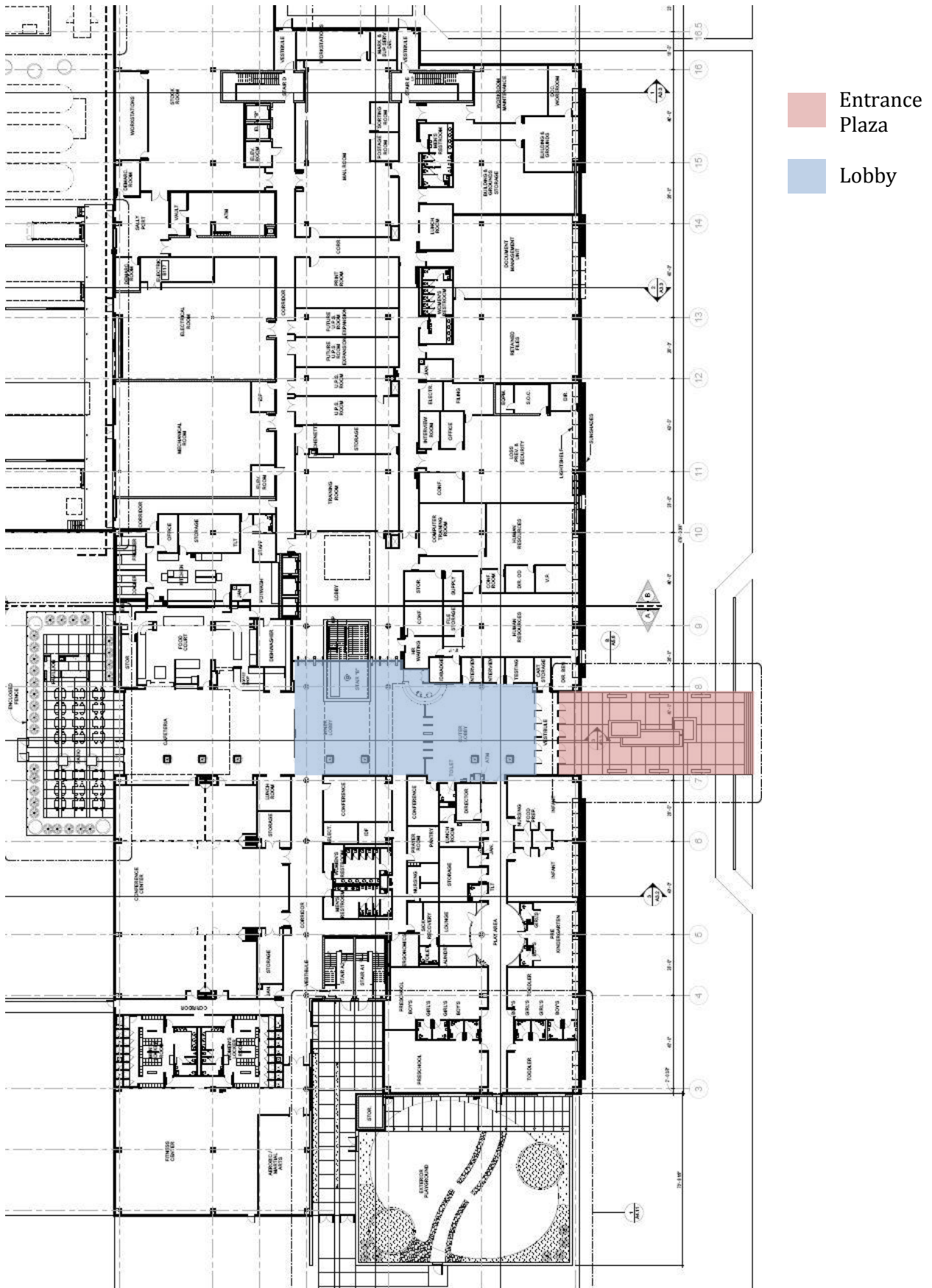


Board Room Furniture Floor Plan



Board Room Section





Overall First Floor Plan



